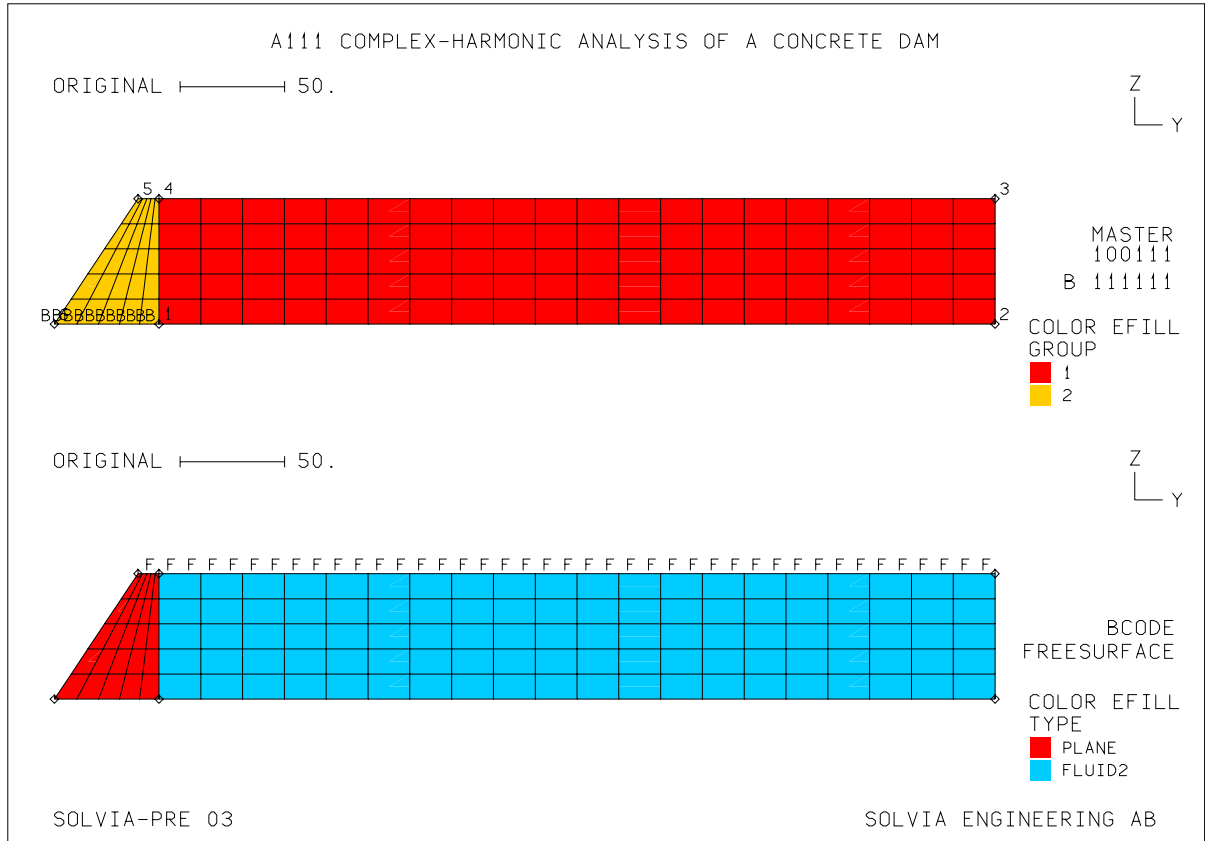
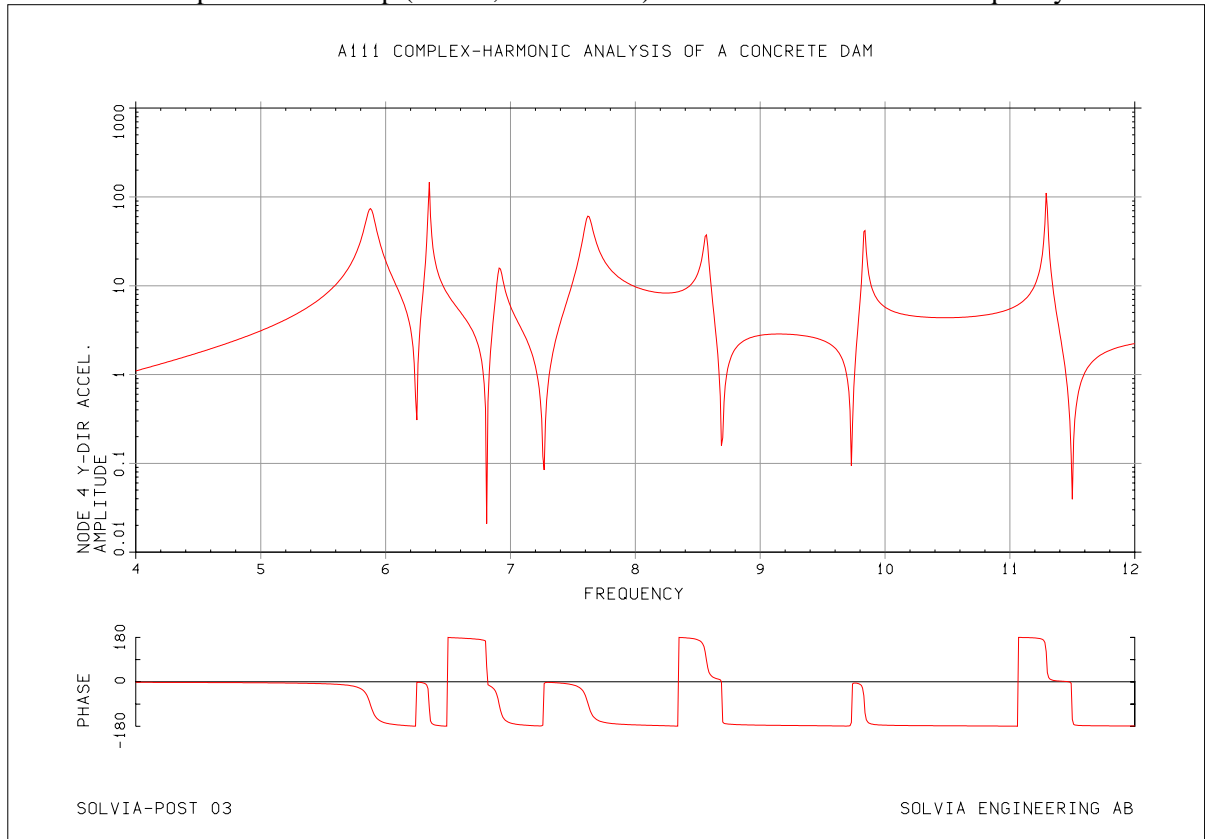


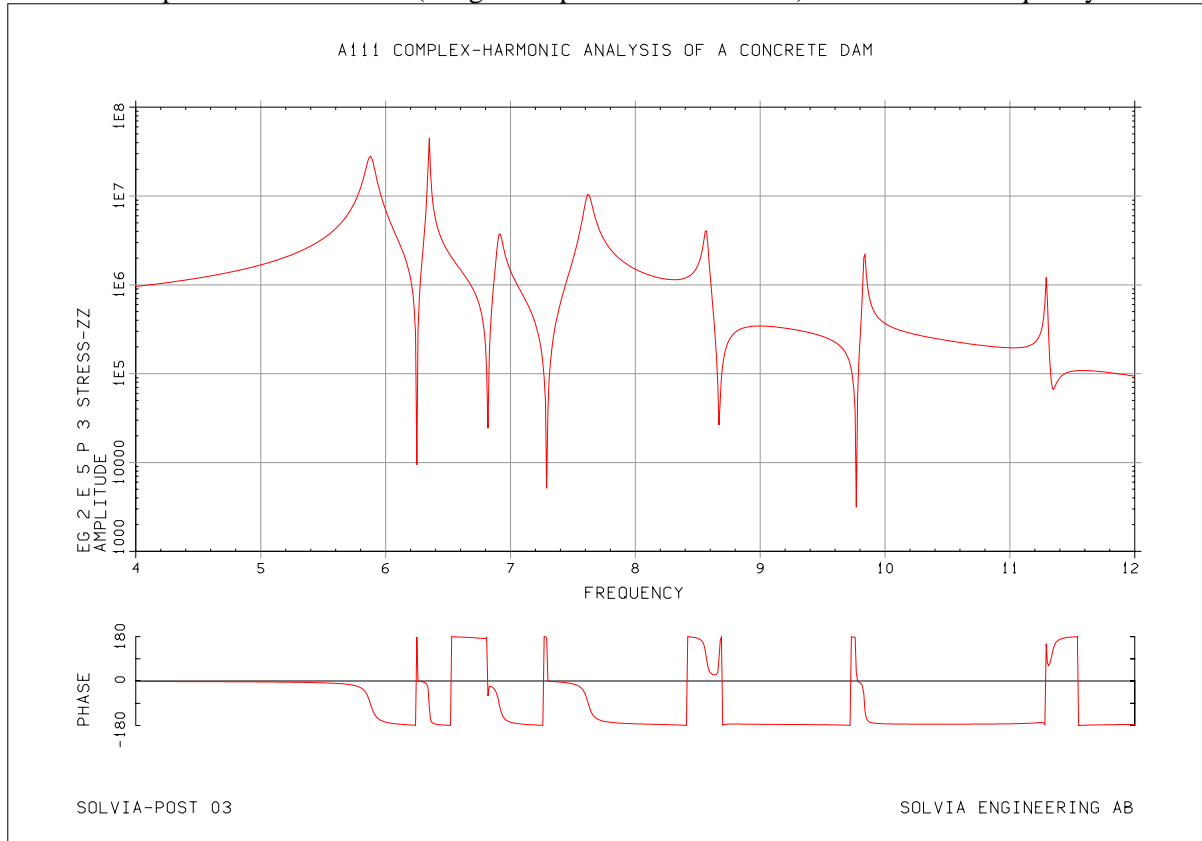
Model with user defined nodes



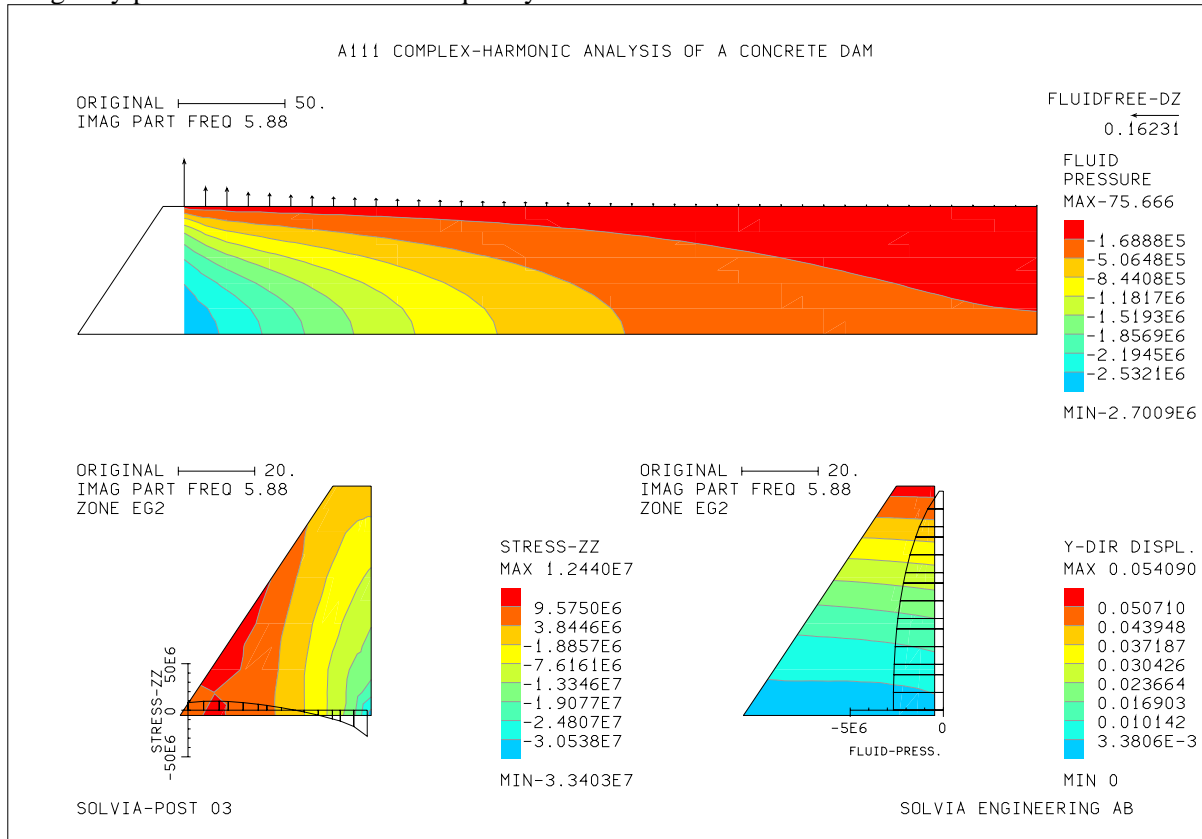
Acceleration response at dam top (node 4, Y-direction) as function of excitation frequency



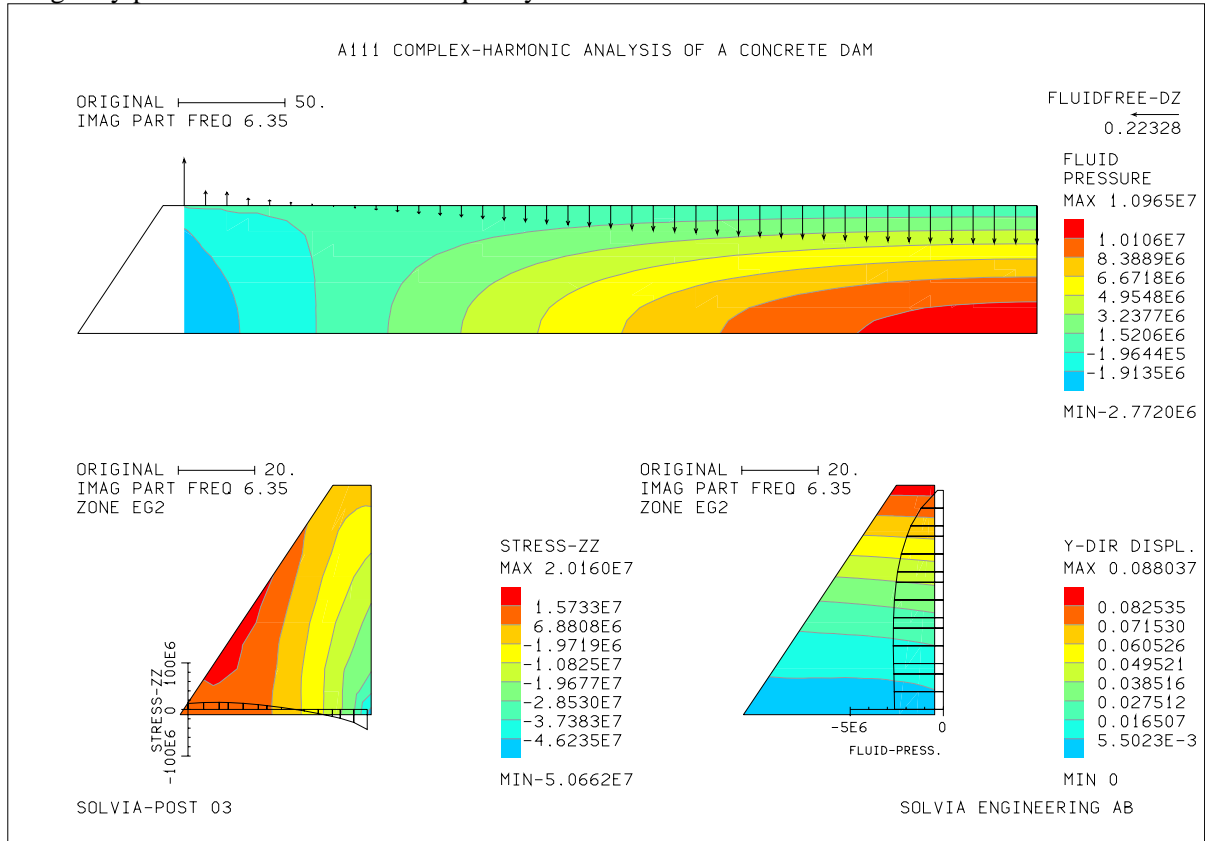
Stress-ZZ response at dam bottom (integration point nearest node 1) as function of frequency.



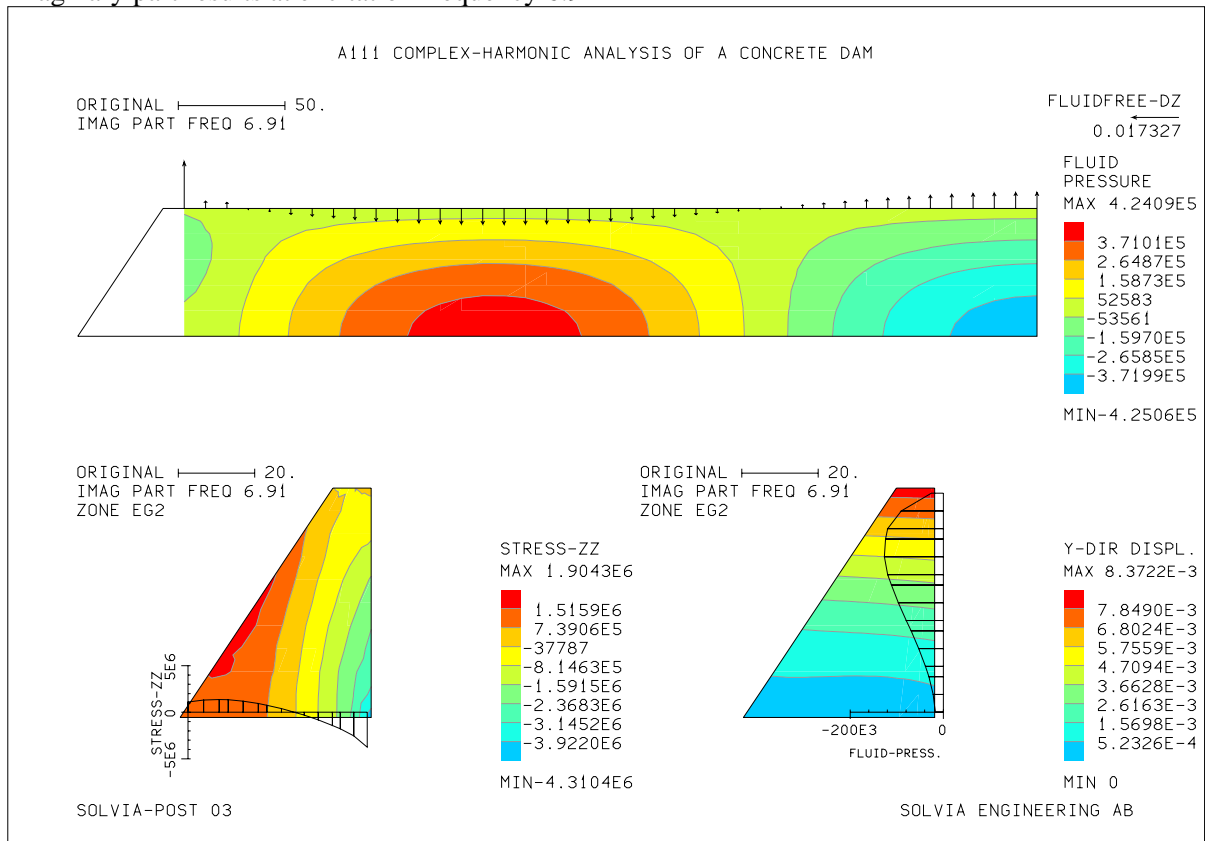
Imaginary part results at excitation frequency 5.88 Hz.



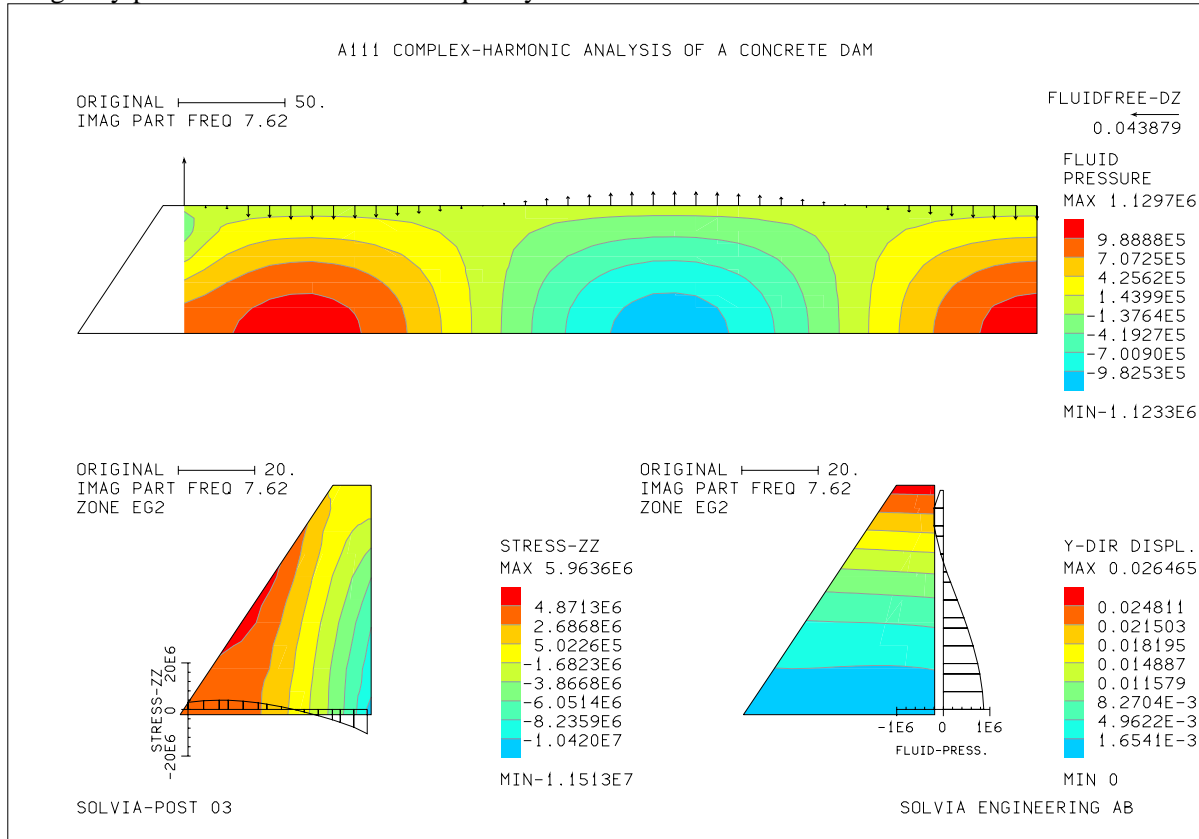
Imaginary part results at excitation frequency 6.35 Hz.



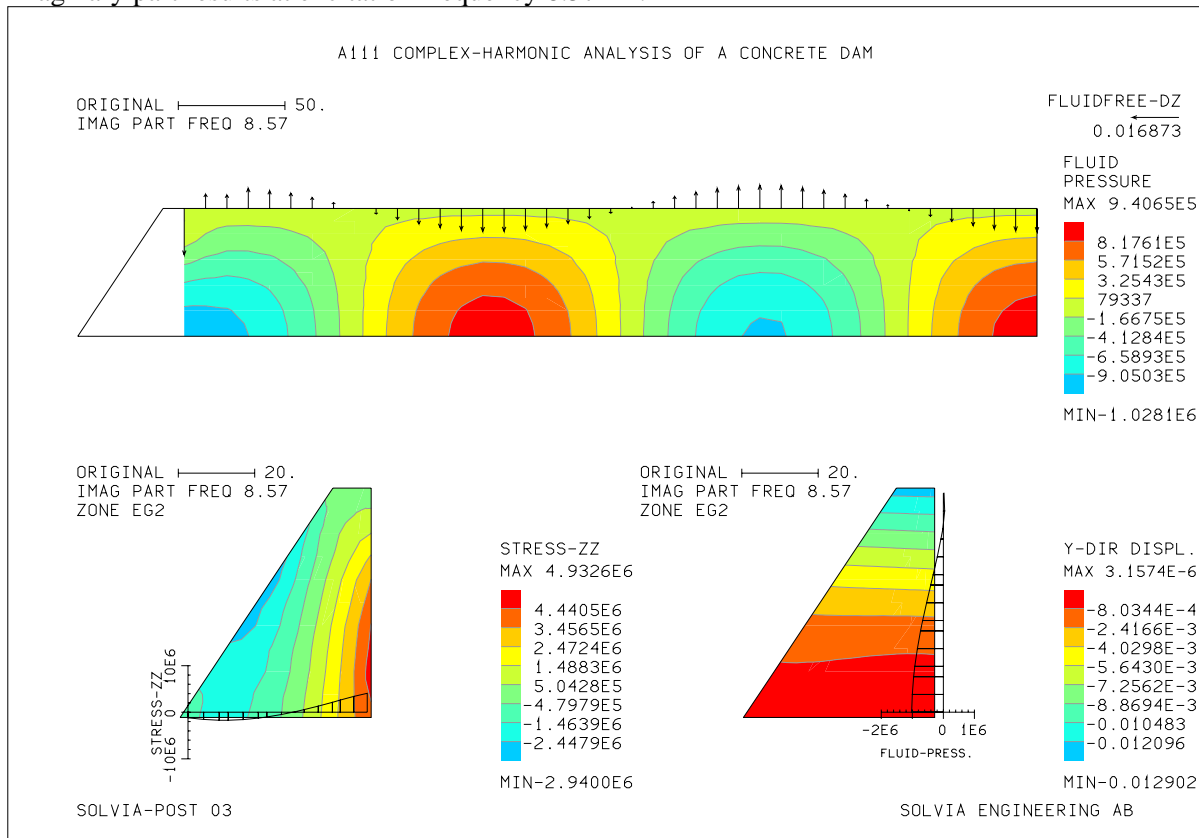
Imaginary part results at excitation frequency 6.91 Hz



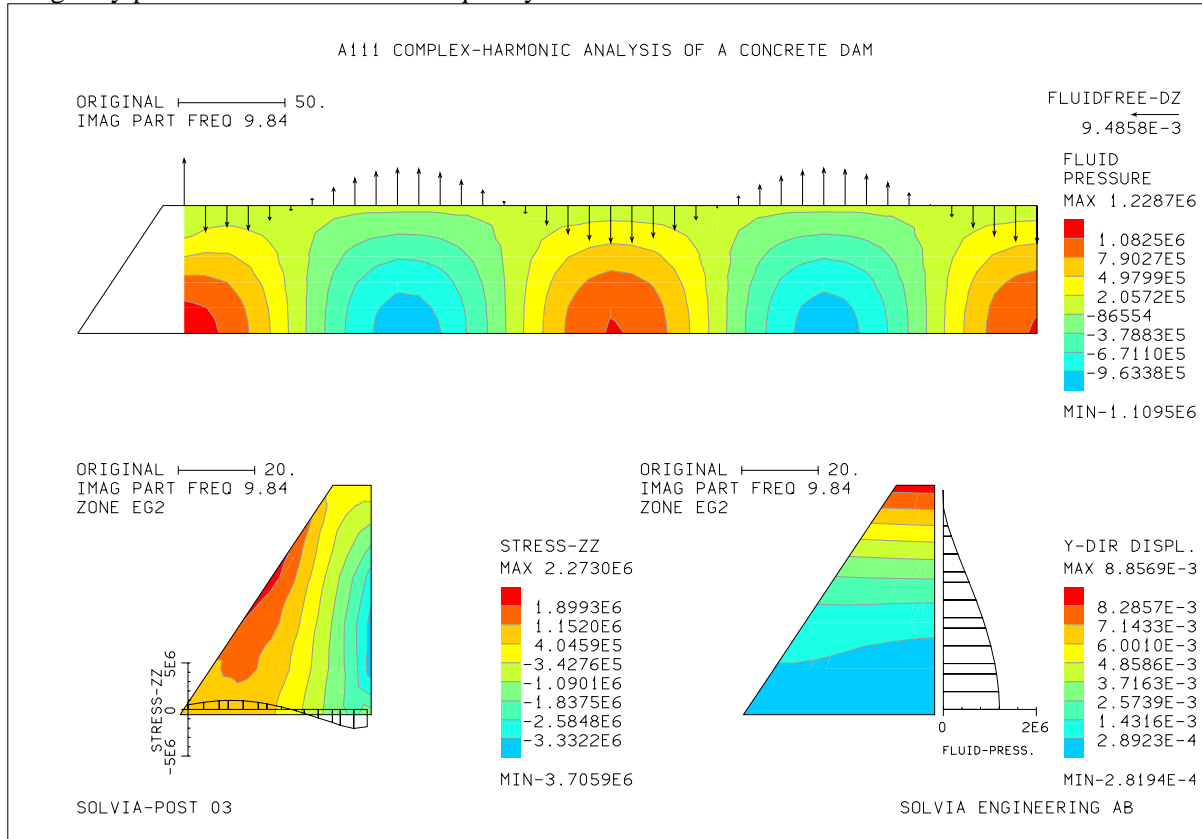
Imaginary part results at excitation frequency 7.62 Hz.



Imaginary part results at excitation frequency 8.57 Hz.



Imaginary part results at excitation frequency 9.84 Hz.



Imaginary part results at excitation frequency 11.29 Hz.

