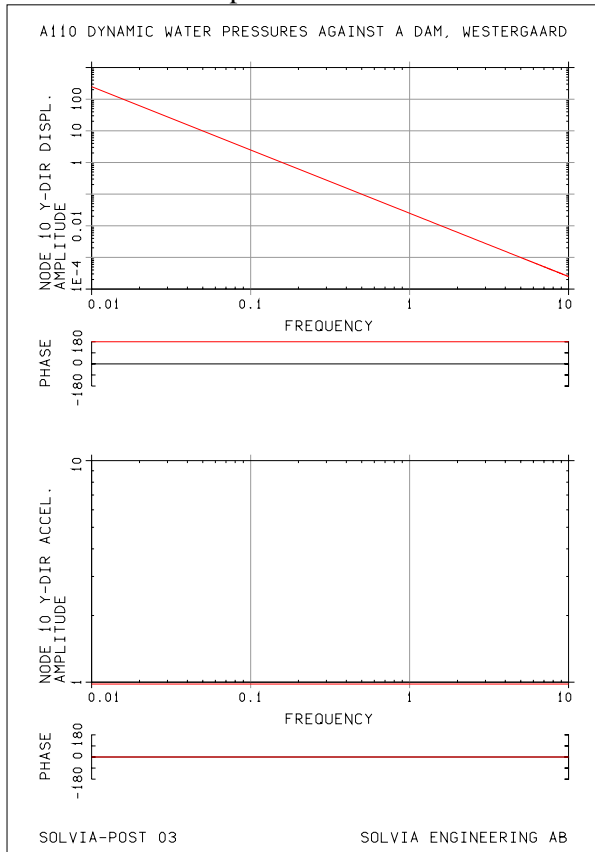
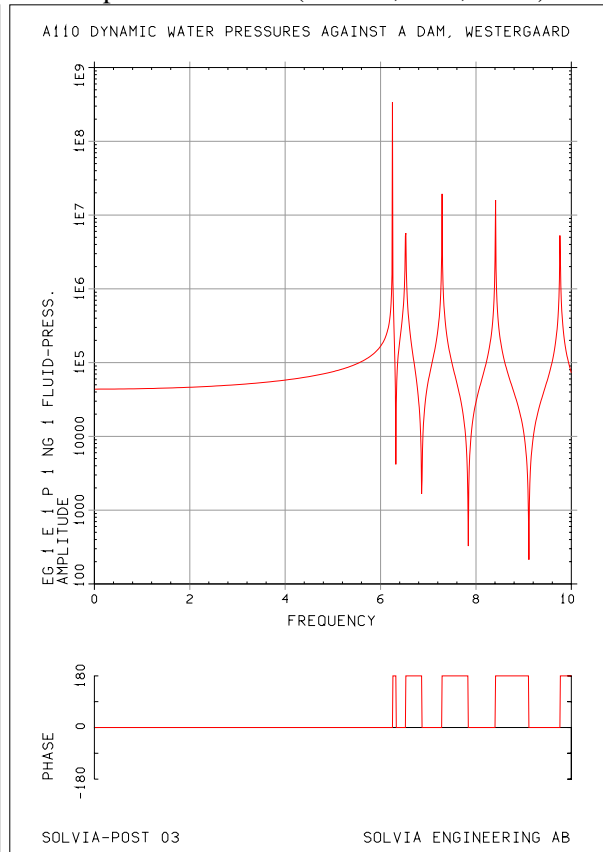


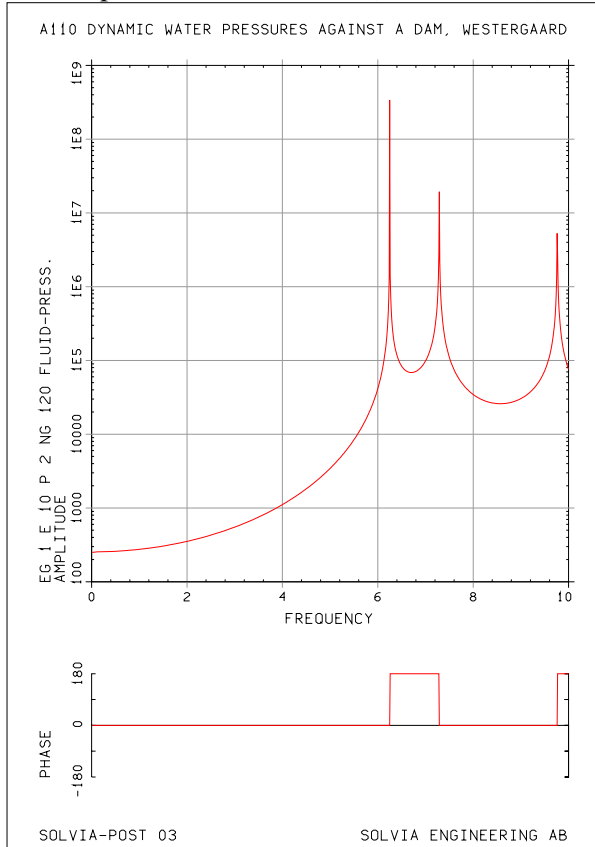
Horizontal dam displacements and accelerations.



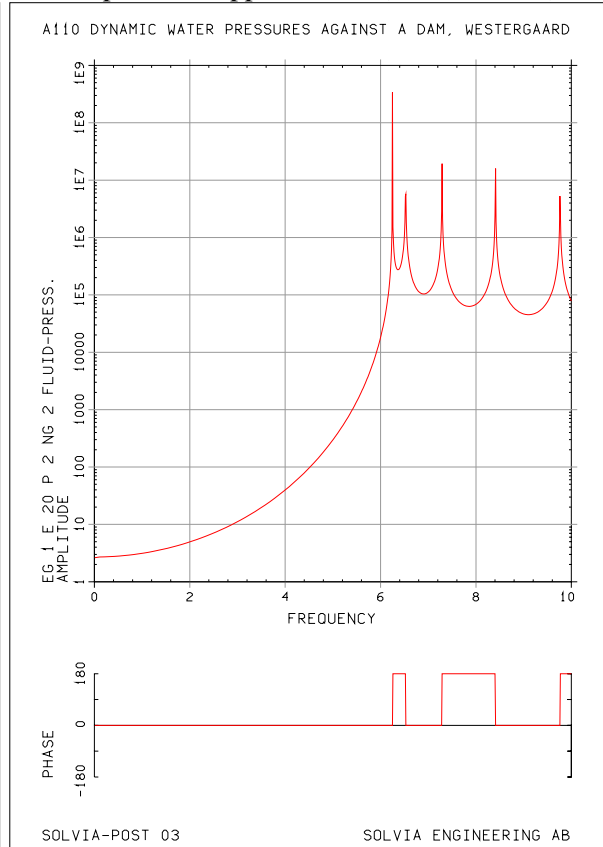
Bottom pressure at dam (node=1, Y=0, Z= 0.).



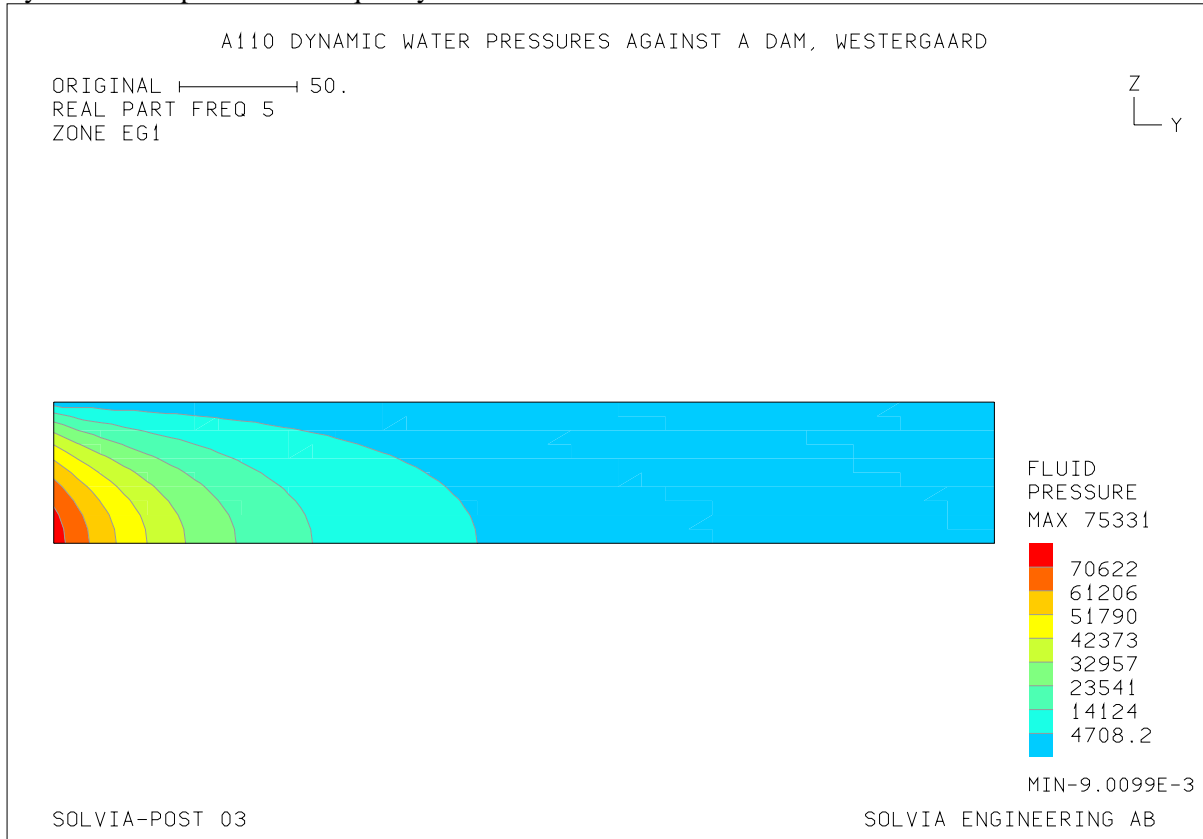
Bottom pressure, mid location (Y=200, Z= 0.).



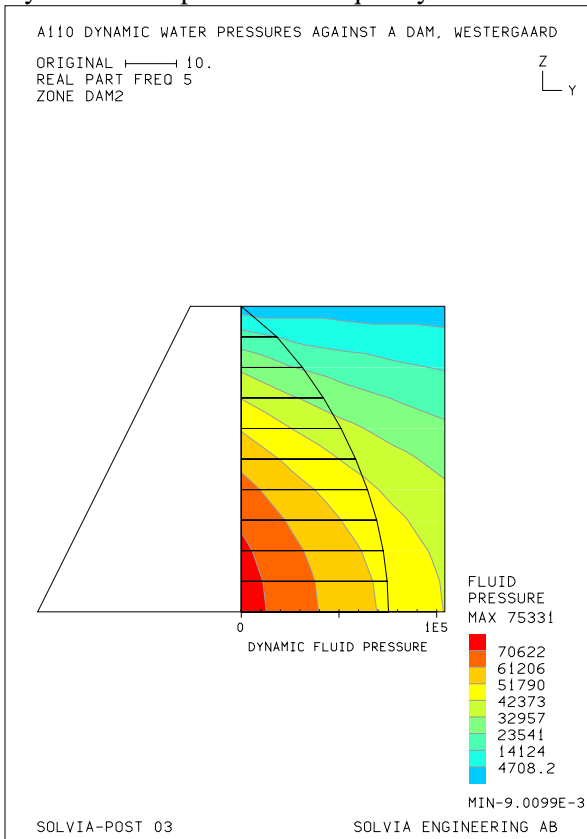
Bottom pressure, opposite dam (Y=400, Z= 0.).



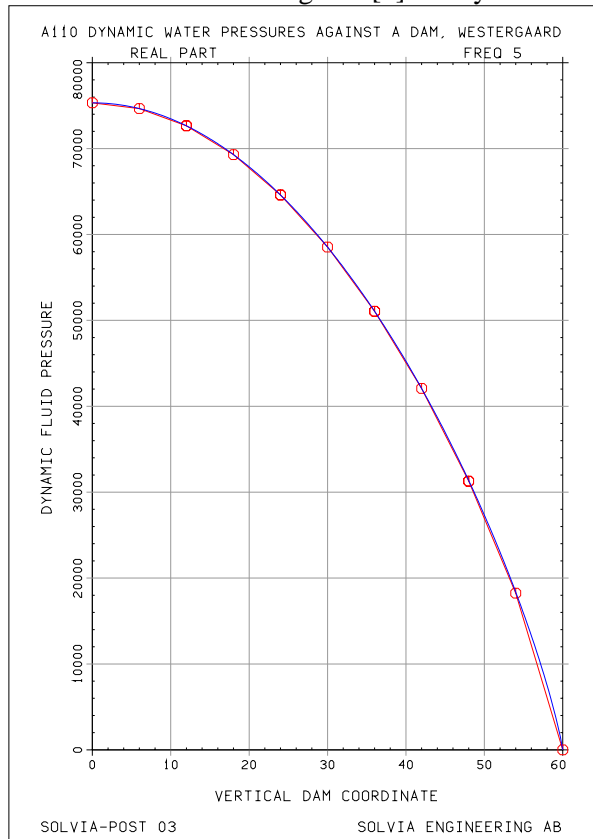
Dynamic fluid pressure at frequency 5.0 Hz.



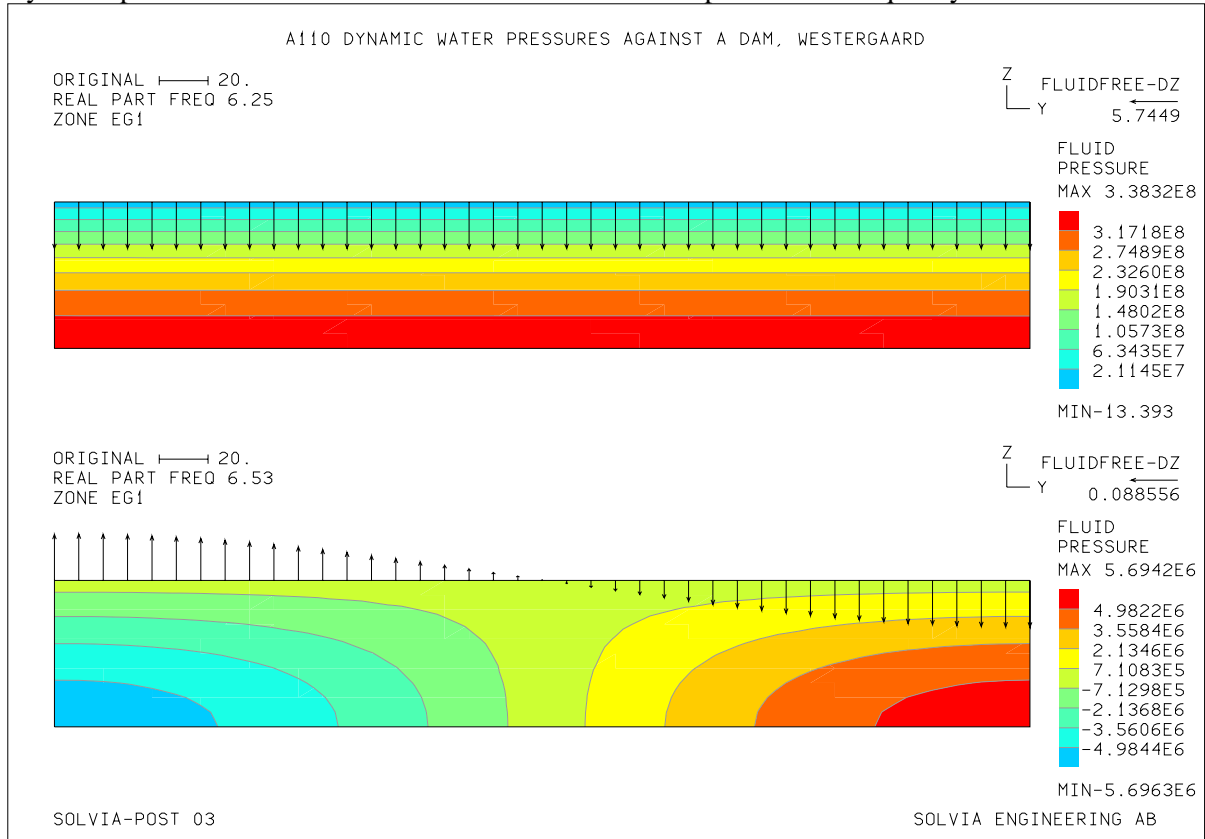
Dynamic fluid pressure at frequency 5.0 Hz.



Dynamic fluid pressure at frequency 5.0 Hz. Blue curve is based on Westergaard [1] theory.



Dynamic pressure distributions and vertical free surface amplitudes for frequency 6.25 and 6.53 Hz.



Dynamic pressure distributions and vertical free surface amplitudes for frequency 7.29 and 8.41 Hz.

